

## Highlights

### Performance Monitoring

- Monitor all FlowIntelligence platforms and sensors for health, performance, and status
- Monitor all Atlas Cloud platforms, virtual environments and solutions for health, performance, and status
- Analyze and identify hardware or software components for problems that may affect platforms and application operations

### Operational Control

- Manage applications in the FlowIntelligence and Atlas Cloud solution suites
- Manage, control and deploy supporting virtual environments
- Manage under cloud and over cloud functions
- Manage rules and events for FlowIntelligence sensor applications
- Remotely Stop, Start and Restart platforms, services and applications

### Centralized Configuration

- Centralized configuration for platforms, operating environments and applications with embedded playbooks
- Centralized inventory & configuration for platforms and applications
- Centralized rules & events repository
- Centralized Threat Intelligence repository
- Centralized GIT repository for enterprise application, patch and playbook updates

## Monitor, Control and Configure for Enterprise and Global Operations

Systems Management Center provides cloud and cyber operators with open, industry standard tools to manage Bivio Networks technology for FlowIntelligence™ and Atlas Cloud™. It delivers performance monitoring, operational control as well as centralized configuration for the platforms, operating environment and applications. Systems Management Center implements industry-leading tools and concepts for the monitor, control and configure processes. The solution is powered by Red Hat® and Elastic® to deliver a unified and comprehensive capability to manage the FlowIntelligence™ and Atlas Cloud technology for enterprise and global operations.

System Management Center solves many challenges for enterprise as well as global cyber and cloud management operations. When it pertains to cyber operations, Systems Management Center permits analysts to monitor the FlowIntelligence Adaptive Cyber Defense Platforms, operating environments, and sensors applications. It provides provisioning services for deploying new or updated sensor applications, rules, events and threat intelligence indicators as well as managing the control process for the sensor ecosystem. For Atlas Cloud, it enables operators to fully manage, control and configure the platforms, operating environments and applications for virtual and software defined networks. Whether it is a platform-as-a-service or infrastructure-as-a-service, Systems Management Center eases the burden for cloud operators.

## Features and Capabilities

Systems Management Center provides advanced management and control the FlowIntelligence™ and Atlas Cloud™ technology solutions. The features and capabilities are summarized below.



### Performance Monitoring

Monitor and analyze FlowIntelligence as well as Atlas Cloud platform operating environments, technology solutions and applications for performance. Utilize the data gathered to tune the platforms, operating environments and applications for operational success. The Systems Management Center analyzes hundreds of parameters in the FlowIntelligence and Atlas Cloud solutions to enable operators and analyst to successfully operate FlowIntelligence and Atlas Cloud technologies at peak performance.



### Operational Control

Remote control of the FlowIntelligence and Atlas Cloud technology solutions is key for enterprise and global operations. Systems Management Center permits operators and analyst to stop, start and restart these technologies and their component platforms, operating environments and applications. With the ability to remotely place specific components on-line or off-line is crucial to effective operational control.



### Centralized Configuration

Configuration management is essential for a well-managed operating environment. Systems Management Center provides the minimalist approach to centralized configuration management utilizing consistent, highly reliable and secure process that leverages an extremely low learning curve for operators and analyst. It performs configuration management with agentless technology through SSH and passwords. Powered by Ansible®, Systems Management Center collects current configurations, allows changes to be applied and enables a "dry run" mode to preview any changes. Secure and Agentless – Connect through an SSH session, pass user supplied credentials to the configuration target(s), with support for sudo and Kerberos without requiring an agent to perform the process. Batteries included – with more than 1,300 configuration modules available in addition to the FlowIntelligence and Atlas Cloud modules included in the Systems Management Center, it become a cornerstone of building additional automations. More than 4,000 additional automation modules are available from the open source community to extend Systems Management Center to the overall IT operations environment.



### Automation and Orchestration

Systems Management Center provides automation for operational control and configuration management. An embedded workflow engine permits operators and analyst to add visual workflows from the library to automate and orchestrate many tasks. This can range from pushing new updates and configurations to starting, stopping or restarting systems, applications and tools.



### Role-based Access Control

Systems Management Center implements full role-based access control for multi-user access. It ensures each user, class or group only accesses the appropriate functions or operations allowed or permitted for their role.



### Ease of Operation

Operators and Analyst can rapidly leverage the tools in Systems Management Center. The web user interfaces for monitor, control and configure are intuitive, delivers ease of use and does not require advanced programming skills for the system's tools. New operators and analysts can dive in and make an impact right from the start. This enables more seasoned operators and analysts to focus on more critical and strategic requirements.



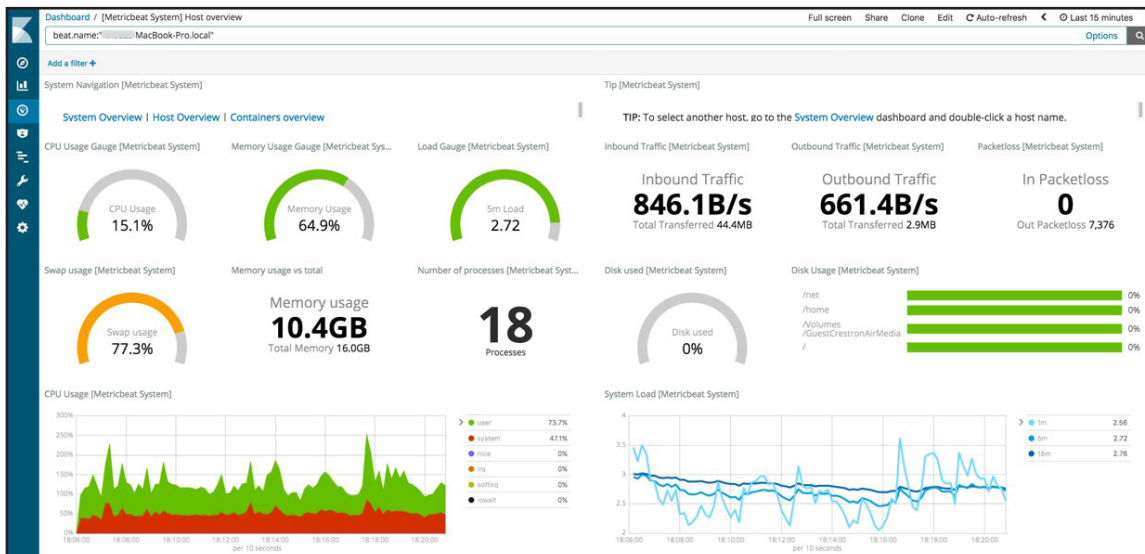
### Friction-less Updates

Systems Management Center includes a GIT repository for handling curated patches, modules, applications and updates. This reduces the risk of unwanted updates that may not be compatible with the operating environment. The GIT repository is couple with the configuration management process to ensure what is delivered is consistent with the organization's configuration control policies.



### Open and Extensible Architecture

Systems Management Center is built to support the FlowIntelligence and Atlas Cloud technology solutions. However, it utilizes an open architecture with virtual nodes and adding additional nodes or capabilities is easily accomplished. Extending this solution to larger IT operations is possible since it leverages industry-standard tools. Ask your Bivio Solutions Architect about supporting third-party tools and technologies.



## Distributed Operations

Managing geographically disbursed environments creates a challenge for cloud and cyber operators. Systems Management Center solve this problem with a comprehensive suite of tools based on industry accepted practices. The monitoring component is based on Elastic® and provides complete application and platform health, performance and status. It aids in the identification of events and issues that may affect platform or applications operating environments. Systems Management Center also alerts an operator when a platform or application is not responding or performing properly. The configuration and control functions are enabled with Red Hat® tools utilizing Virtualization Manager and Ansible. Virtualization Manager enables cloud and cyber operators to manage enterprise and global virtualization environments. Ansible provides feature-rich functions for inventory, configuration and control of the customer's operating environment. It enables operators with management of software defined networks for private, hybrid and public cloud environments to include platforms, infrastructures and applications.

## Turn-Key Solution

Systems Management Center is delivered as a turn-key management solution on Bivio Networks Atlas Cloud platforms. The Atlas Cloud platforms permit the solution to scale from the small and medium enterprise to the Fortune 100 and Service Provider operations. The feature-rich hardware platforms are designed with carrier-grade redundancy qualities to ensure non-stop operations.

Scaling the management environment for each organization is done by our Solutions Architects. They can perform a comprehensive analysis to identify, design and deliver a complete solution to meet the organization's requirements.

## Summary

Systems Management Center is a comprehensive, open and extensible management solution for the FlowIntelligence and Atlas Cloud technologies. It contains intelligent features for innovative management of platforms, operating environments and applications. It is in an elite class for its combined features and capabilities. Contact Bivio Networks sales team to see how Systems Management Center can enhance your cyber security and cloud operations teams.

### About Bivio Networks

Bivio Networks is a leading provider of network systems for securing, monitoring and controlling critical network infrastructure. Bivio's global customer base includes Fortune 1000, worldwide government agencies and service providers. Bivio's products enable customers and partners, who include application developers and systems integrators, to develop and deploy leading solutions to secure, monitor and control customer networks. Bivio is privately-held and is headquartered in the San Francisco Bay Area.

©2020 Bivio Networks, Inc. All rights reserved. The Bivio logo, BiviOS, FlowIntelligence and Cyber Mission Ready are trademarks or registered trademarks of Bivio Networks, Inc. All other company and product names may be trademarks of their respective owners. Bivio Networks may make changes to specifications and product descriptions at any time, without notice. P/N 62000-00045 Rev 1



Bivio Networks, Inc.  
4457 Willow Road, Suite 240  
Pleasanton, CA 94588  
Tel: +1 925 924 8600  
www.bivio.net